

# Population-based analysis of the effect of a comprehensive, systematic change in an emergency medical services resource allocation plan on 24-hour mortality

John M. Tallon, MD, MSc<sup>\*†</sup>; Lu Zheng, BSc<sup>\*</sup>; Julie Wei, MSc<sup>\*</sup>; William Dick, MD, MSc<sup>†</sup>; George Papadopoulos, MPH<sup>\*</sup>; Ognjenka Djurdjev, MSc<sup>†</sup>

## CLINICIAN'S CAPSULE

### What is known about the topic?

There are no large population-based studies demonstrating the impact of changing EMS resource allocation (ambulance response) and patient outcomes.

### What did this study ask?

What was the impact of implementing a new evidence-based EMS resource allocation plan on 24-hour mortality?

### What did this study find?

This study found a 7% reduction in the probability of dying within 24 hours of ambulance response with the EMS response plan.

### Why does this study matter to clinicians?

Clinicians involved in EMS systems and ambulance response may consider implementing a similar data linked analysis to evaluate patient outcomes.

start of the revised resource allocation plan implementation, while simultaneously controlling for pre-existing trends.

**Results:** The derived cohort comprised 562,546 cases (April 2012–March 2015). When adjusted for age, sex, urban/metro region, season, day, hour, and dispatch determinant, the probability of dying within 24 hours of an EMS call was 7% lower in the post-resource allocation plan-revision cohort (OR = 0.936; 95% CI: 0.886–0.989;  $p = 0.018$ ). A subgroup analysis of immediately life-threatening cases demonstrated similar effect (OR = 0.890; 95% CI: 0.808–0.981;  $p = 0.019$ ). Using time series analysis, the descending changes in overall 24-hour mortality trend and the 24-hour mortality trend in immediately life-threatening cases, were both statistically significant ( $p < 0.001$ ).

**Conclusion:** Comprehensive, evidence-informed reconstruction of a provincial EMS resource allocation plan is feasible. Despite change in crew level response and resource allocation, there was significant decrease in 24-hour mortality in this pan-provincial population-based cohort.

## ABSTRACT

**Background:** Resource allocation planning for emergency medical services (EMS) systems determines appropriate resources including what paramedic qualification and how rapidly to respond to patients for optimal outcomes. The British Columbia Emergency Health Services implemented a revised response plan in 2013.

**Methods:** A pre- and post-methodology was used to evaluate the effect of the resource allocation plan revision on 24-hour mortality. All adult cases with evaluable outcome data (obtained through linked provincial health administrative data) were analyzed. Multivariable logistic regression was used to adjust for variations in other significant associated factors. Interrupted time series analysis was used to estimate immediate changes in level or trend of outcome after the

## RÉSUMÉ

**Contexte:** La planification de l'allocation des ressources aux services médicaux d'urgence (SMU) détermine une attribution appropriée des ressources, notamment en ce qui concerne la qualification du personnel paramédical et le temps de réponse en vue de l'obtention de résultats optimaux. Les British Columbia Emergency Health Services ont donc procédé, en 2013, à la mise en œuvre d'un plan d'intervention révisé.

**Méthode:** Il s'agit d'une étude de type avant-après, visant à évaluer l'effet de la révision du plan d'allocation des ressources sur la mortalité au bout de 24 heures. Ont été analysés tous les dossiers médicaux d'adultes contenant des données sur des résultats évaluable (obtenus à l'aide de données administratives provinciales liées sur la santé). L'analyse de régression logistique plurifactorielle a permis de tenir compte

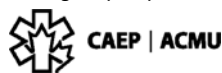
\*British Columbia Emergency Health Services, Vancouver, BC; †Department of Emergency Medicine, University of British Columbia, Vancouver, BC; and the ‡Provincial Health Services Authority, Vancouver, BC.

**Correspondence to:** Dr. John M. Tallon, Vice-President, Chief Medical Officer, BC Emergency Health Services, 150-2955 Virtual Way, Vancouver, BC V5M 4X6; Email: [john.tallon@bcehs.ca](mailto:john.tallon@bcehs.ca)

© Canadian Association of Emergency Physicians

CJEM 2019:1–9

DOI [10.1017/cem.2019.429](https://doi.org/10.1017/cem.2019.429)



CJEM • JCMU

2019 1

d'écarts observés dans d'autres facteurs associés importants. Par ailleurs, l'étude de séries temporelles interrompues a permis à la fois d'estimer les changements immédiats de degré ou de tendance concernant les résultats après l'instauration du plan d'allocation des ressources révisé, et de tenir compte des tendances préexistantes.

**Résultats:** La cohorte à l'étude comptait 562 546 cas (avril 2012 – mars 2015). Après rajustement des données selon l'âge, le sexe, le type de région (urbaine ou métropolitaine), les saisons, le jour, l'heure et les déterminants de la répartition, le risque de mourir dans les 24 heures suivant un appel aux SMU était 7% moins élevé dans la cohorte formée après la mise en œuvre du plan d'allocation des ressources révisé (risque relatif approché [RRA] = 0,936; IC à 95% : 0,886–0,989;  $p = 0,018$ ) que dans celle formée avant. De plus, un effet comparable (RRA = 0,890; IC à 95% : 0,808–0,981;  $p = 0,019$ ) a été

démontré dans une analyse par sous-groupe des cas de danger de mort immédiate. D'après l'analyse des séries temporelles, la tendance à la diminution de la mortalité générale au bout de 24 heures et cette même tendance de la mortalité au bout de 24 heures dans les cas de mort immédiate étaient toutes deux statistiquement significatives ( $p < 0,001$ ).

**Conclusion:** Il est possible de procéder à une révision globale, fondée sur des données probantes, du plan provincial d'allocation des ressources aux SMU. Malgré les changements apportés au temps de réponse des équipes d'urgence et à l'allocation des ressources, une diminution significative de la mortalité au bout de 24 heures a été enregistrée dans cette étude de cohortes panprovinciale, fondée sur la population.

**Keywords:** Emergency medical services, Quality Improvement, resource allocation planning

## **BACKGROUND**

The optimization of resource allocation for emergency medical services (EMS) systems determines appropriate response plans for patients to minimize morbidity and mortality. The resource allocation plan prescribes the paramedic qualification that should respond and at what speed, as well as the associated potential first responder attendance for a given 911 call that is EMS-system specific.<sup>1,2</sup> Most EMS systems revise the resource allocation according to dispatch codes on a regular basis in the interests of optimizing patient care.<sup>3–5</sup>

As the sole legislated authority to provide emergency health services in the Canadian province of British Columbia, BC Emergency Health Services (BCEHS) has a responsibility to use resources safely, efficiently, and in the best interest of patient care, safety, and outcomes.<sup>6</sup> Prior to 2012, BCEHS revised its resource allocation based on a non-structured, subjective evaluation. In 2012–2013, BCEHS adopted an evidence-informed methodology, and changes were implemented accordingly.<sup>7</sup> The decision for change used clinical and operational data to validate the appropriateness of the assigned resources and speed of response.<sup>8</sup> The development of an EMS response plan is based on evidence for interventions and response provided by data generated from call-taking patient-interrogation tools such as the Medical Priority Dispatch System (MPDS®). The MPDS® protocol was designed to standardize and codify the operation. Each determinant is made up of a number, ranging from 1 (abdominal pain) to 32

(unknown); a letter ranging from O (very minor) to E (immediately life-threatening), relating to the severity of the patient's condition; and a number that is a subgroup and provides more specific information about the patient's condition.<sup>9–12</sup> As a result of the 2013 response plan revision, out of approximately 1,300 MPDS® codes, 161 codes were reclassified: 68 were reclassified from requiring advanced life support to requiring basic life support, 74 were reclassified from requiring a rapid response ("lights-and-siren") to regular speed response ("no-lights-and-siren"), and 19 were reclassified to a combination of resource and speed upgrades or downgrades. Fire first responders remained involved in the most time-sensitive incidents requiring interventions such as cardiopulmonary resuscitation (CPR) and defibrillation.

The purpose of this study was to determine the effect on 24-hour mortality of the implementation of a revised resource allocation plan in a province-wide, population-based EMS system.<sup>10,13,14</sup> Twenty-four hour mortality was chosen because of its ability to reflect variations in health status and to tie mortality to the actual situation of 911 EMS treatment and transport versus other causation that might have occurred in the hospital contributing to 30-day mortality.<sup>15</sup>

## **METHODS**

### **Study population and setting**

BCEHS serves a population of 4.5 million in an area of 944,735 km<sup>2</sup> covering the entire province of British

Columbia. The 911 dispatch call volume is over 500,000 events per annum, and there are approximately 4,000 paramedics ranging from emergency medical responders to advanced life support paramedics (excluding first responders).<sup>6</sup> The outcomes and EMS data used for this observational study covered 36 months from 2012 to 2015 (19 months before implementation of the new response plan and 17 months after implementation). Patients under 18 years of age, obvious deaths, and MPDS® determinant O (referral to nurse line) were excluded from this evaluation. This study excluded air medical response transport and inter-facility transfers.

### Data sources

BCEHS data included records from its computer-aided dispatching system from Intergraph™ (<http://www.hexagon-safetyinfrastructure.com/products/command-control-and-communications/intergraph-computer-aided-dispatch>) and patient care reports submitted by paramedics. Patient care reports data were housed electronically in a patient care information system built by BCEHS. The National Ambulatory Care Reporting System (<https://www.cihi.ca/en/national-ambulatory-care-reporting-system-metadata>) for Emergency Department (ED) admission data and the discharge abstract database (<https://www.cihi.ca/en/discharge-abstract-database-metadata>) for hospital separation data were also included in the analysis.<sup>16,17</sup>

### Data linkage and cohort derivation

Every personal health number recorded by paramedics was validated at BCEHS given the existing billing process; therefore, the personal health number was used to perform deterministic data linkage. The personal health number completeness was 93.7% in the pre-period and 94.4% in the post-period. The increase in personal health number completeness was common in each geographical area and in each patient severity group that was classified by MPDS® determinant. The disposition result of the ambulance data was included as part of the overall calculation of mortality as the only available outcome data for patients who died before reaching the hospital. These cases were not expected to be linked with National Ambulatory Care Reporting System or discharge abstract database (132,216 cases). There were 965,346 records expected to be linked. If a patient was transported by ambulance to the hospital, the ambulance record was linked to the National Ambulatory Care

Reporting System record by the personal health number and a six-hour time window between 911 phone calls received and the registration time at the ED. If a patient had multiple 911 phone calls or multiple ED registrations in the six-hour period, the records with the closest timestamps between the ambulance and ED registration were considered as the matching visit. After the ED visit, if the patient was admitted to the hospital, the discharge abstract database record was linked by personal health number and a six-hour time window between the ED disposition time and hospital admission time.<sup>18,19</sup> Records with an exact 24-hour difference between the ED disposition time and hospital admission time were linked assuming the date was entered incorrectly in either National Ambulatory Care Reporting System or discharge abstract database. Without this step, these records would not have had outcome data available for analysis. In total, 716,963 records were linked with National Ambulatory Care Reporting System or discharge abstract database out of the 965,346 expected that equated to a 74% linkage rate. Cases that were not constantly under National Ambulatory Care Reporting System collection coverage throughout the entire period were removed to control for consistent outcome data during the study period.

### Statistical analysis

All data preparation and statistical analysis were conducted using SAS® version 9.4. Descriptive statistics were performed to describe the change in the cohort during the pre- and post-study periods and to inform the inferential analysis. The 24-hour mortality was modelled using the pre- and post-resource allocation plan revision period as the targeted predicting variable and confounding variables. Adjusted odds ratios (OR) were calculated using logistic regression, and goodness of fit test was performed. Variables in the regression were selected based on their contribution to mortality.

Univariate logistic regression was first performed to exam the association between covariates and 24-hour mortality, as well as to determine the interaction between covariates and the pre- and post-periods. The final multivariate logistic regression was built with the targeted predicting variable of the pre- and post-resource allocation plan revision period and the significant confounding variables that were selected forward stepwise from the above steps.

Interrupted time series is a valuable tool for evaluating the effectiveness of population-level health interventions. The interrupted time series design was based on a regression analysis of outcomes that occurred during a continuous sequence of time and is frequently applied in population-level policy evaluations.<sup>20</sup> The interrupted time series analysis was applied by fitting a generalized least squares regression of the monthly 24-hour mortality during the study period with the time variable and the variables that represent the level and trend change after the resource allocation plan revision to exam the impact of the implementation. Autocorrelation, seasonality, and the opioid overdose population were considered because of an overdose spike started after the study period. There was no seasonality or overdose effects observed, and mortalities that were six months apart were correlated and addressed as the correlation structure of the generalized least squares regression model. The coefficients of level and trend variables imply the impact of the resource allocation plan revision after considering the pre-existing trend of 24-hour mortality that was accounted by the time variable.

### Ethics approval

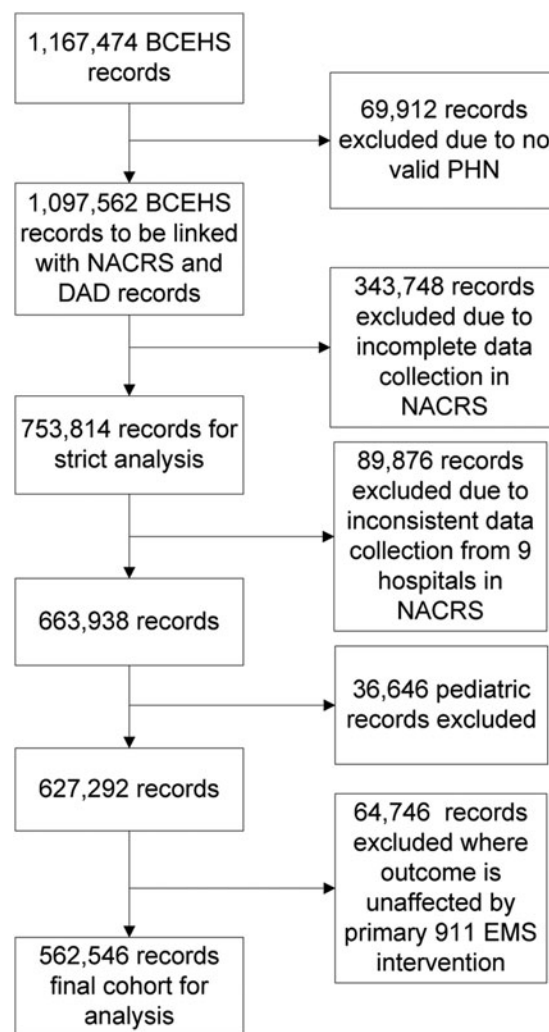
Ethics approval was obtained from the University of British Columbia Clinical Research Ethics Board.

## RESULTS

### Patient characteristics

The study population included 562,546 adult cases attended by paramedics with an evaluable primary outcome measure. Of these, 292,094 patient cases were included before the revision cohort revision was implemented (April 1, 2012, to October 31, 2013) and 270,452 patient cases were included after implementation (November 1, 2013, to March 31, 2015). The derivation of the study population is shown in Figure 1.

Patient characteristics for the overall cohort and the two comparison cohorts are presented in Table 1. The mean age was 59.1 (22%) years; almost one-third (30.1%) of the cases were older than 75 years, with patients being slightly older after implementation; about one-half (50.4%) were male; and over 90% were from urban and metropolitan areas. About 1% of cases



**Figure 1.** Derivation of the study population. BCEHS = BC Emergency Health Services; DAD = Discharge Abstract Dataset; NACRS = National Ambulatory Care Reporting System; PHN = provincial health number.

were classified as immediately life-threatening (MPDS® determinant Echo), with a slightly higher proportion of immediately life-threatening after implementation. The two cohorts were similar in terms of overdose subgroup and distribution of cases across days of the week. There was a lower percentage of cases in the afternoon hours (1200–1800) and a higher percentage of cases in morning hours (0600–1200) after implementation. Because of the pre- and post-periods, there was a significantly higher proportion of winter season cases after implementation, and there was a higher proportion of cases in spring, summer, and autumn seasons before implementation. There were slightly more Charlie and Delta determinant cases after implementation and

**Table 1. Characteristics of study population**

	Total (N = 562,546) %	Pre-Resource Allocation Plan-Revision (n = 292,094) %	Post-Resource Allocation Plan-Revision (n = 270,452) %
Deceased	1.34	1.3	1.38
Age mean, median, (SD)	59.1, 59.8, (22.0)	58.8, 59.2, (22.0)	59.5, 60.5, (22.0)
Age, years			
18–54	43.18	44	42.29
55–64	13.82	13.76	13.89
65–74	12.88	12.53	13.26
75+	30.12	29.72	30.56
Gender			
Male	50.37	50.5	50.23
Female	49.6	49.47	49.74
Unknown	0.03	0.03	0.03
Urban/Metropolitan	93.03	92.95	93.12
ILT	1.23	1.12	1.35
Overdose (naloxone administered)	0.59	0.58	0.6
Season			
Spring (Mar–May)	24.66	25.85	23.36
Summer (Jun–Aug)	25.4	32.27	17.98
Autumn (Sep–Nov)	24.64	25.98	23.19
Winter (Dec–Feb)	25.31	15.89	35.47
Day of week			
Sun	14.52	14.54	14.49
Mon	14.05	13.97	14.13
Tue	13.83	13.67	14
Wed	13.98	13.99	13.98
Thu	14.13	14.38	13.86
Fri	14.53	14.55	14.51
Sat	14.96	14.9	15.03
Hour of day			
0–6	16	15.97	16.04
12–Jun	25.86	25.61	26.13
18–Dec	30.64	30.8	30.46
18–24	27.5	27.62	27.37
MPDS® determinant			
Alpha	28.85	28.83	28.88
Bravo	20.57	21.61	19.45
Charlie	23.21	22.65	23.81
Delta	26.12	25.77	26.5
Echo	1.25	1.13	1.37

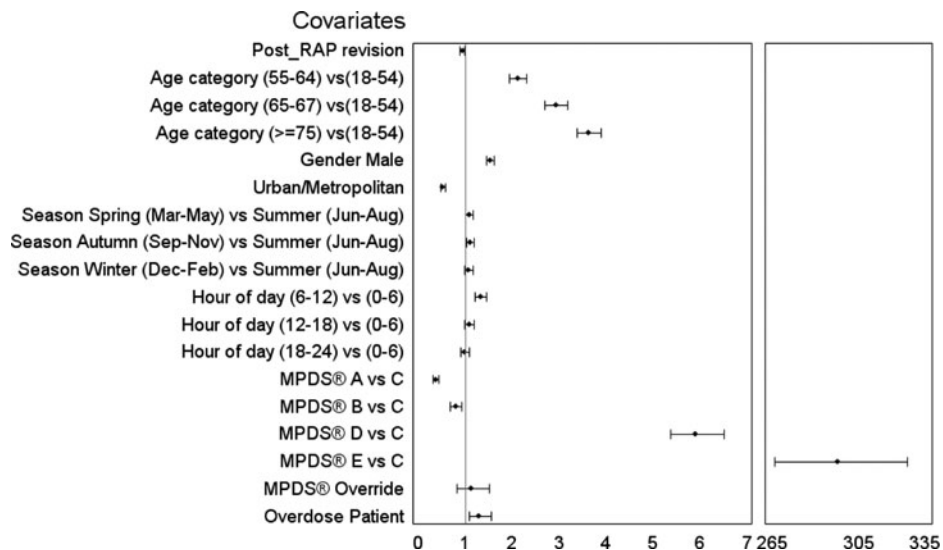
ILT = Immediately life-threatening; MPDS® = Medical Priority Dispatch System.

slightly more Bravo determinant cases before implementation. To better understand the factors influencing survival, we conducted several univariate logistic regression analyses to assess the effects of each variable such as age, gender, event location, acuity, opioid-related overdose, season, day of the week, hour of the day, and MPDS® determinant.

### **Multivariate-adjusted analysis of 24-hour mortality**

Overall, the probability of dying within 24 hours of an EMS call was 7% lower after implementation (OR = 0.936, 95% CI 0.886–0.989,  $p = 0.018$ ) using the multivariate-adjusted model shown in Figure 2. Patient age was significantly associated with worse outcomes:



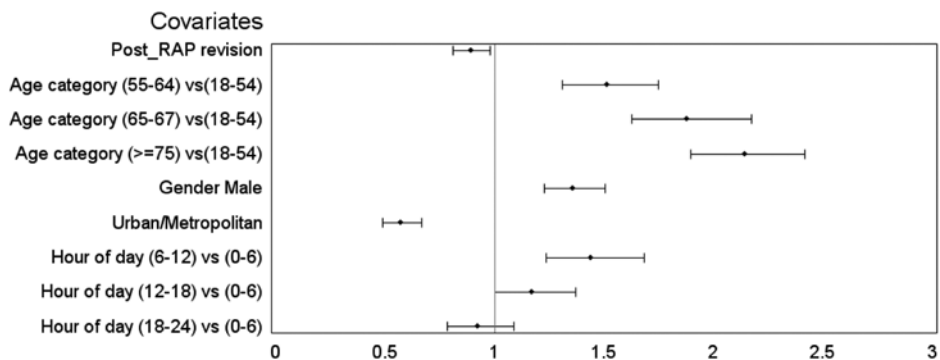


**Figure 2.** The multivariate-adjusted odds ratio of 24-hour mortality for the overall cohort.

compared with 18- to 54-year-old patients, 55- to 64-year-old patients had a two-fold higher probability of 24-hour mortality; 65- to 74-year-old patients had an almost three-fold higher probability of 24-hour mortality; and 75-year-olds or older patients had more than a three-fold higher probability of 24-hour mortality. The probability of 24-hour mortality was significantly higher in males and lower in urban and metro areas. Morning calls received between 6:00 a.m. and noon had a higher probability of 24-hour mortality compared with calls received between midnight and 6:00 a.m. Compared with the MPDS® Charlie determinant cases, Alpha and Bravo determinant cases had an almost three-fold and almost one-third lower probability of 24-hour mortality, respectively, and Delta and Echo determinants had an almost six-fold and 300-fold higher probability, respectively, of 24-hour mortality. The season

did not have a significant association with the primary outcome.

Because of the significant difference in 24-hour mortality among the MPDS® determinants Alpha through Echo, the pre- and post-study period and MPDS® determinant interaction were tested. Although the interaction was not statistically significant ( $p=0.46$ ), the introduction of the interaction reduced the 24-hour mortality difference seen between the two study cohorts. To account for the potential interaction of the acuity, a combined MPDS® pre/post variable was developed. Of all combinations of the pre/post variable and MPDS®, Alpha and Bravo determinants had a significantly lower probability of 24-hour mortality compared with the reference group (Charlie determinant and pre-resource allocation plan revision), and Delta and Echo determinants had significantly worse outcomes.



**Figure 3.** The multivariate-adjusted odds ratio of 24-hour mortality for the immediately life-threatening subgroup.

Furthermore, both Delta and Echo determinants after implementation had a lower probability of 24-hour mortality, as compared with the reference group than their combination before implementation.

The multivariate-adjusted analysis of 24-hour mortality in the immediately life-threatening group is described in Figure 3. After adjustment, the probability of 24-hour mortality of an EMS call was 11% lower after implementation (OR = 0.890, 95% CI 0.808–0.981,  $p = 0.019$ ). Further analysis was undertaken to determine the impact of resource allocation revision on the immediately life-threatening group. In the post-implementation immediately life-threatening group, the proportion of patients with ineffective breathing (MPDS® determinant 06E01) was significantly higher than in the pre-implementation immediately life-threatening group. This was highly correlated with the winter season, as there were more winter months post-implementation.

### Interrupted time series analysis

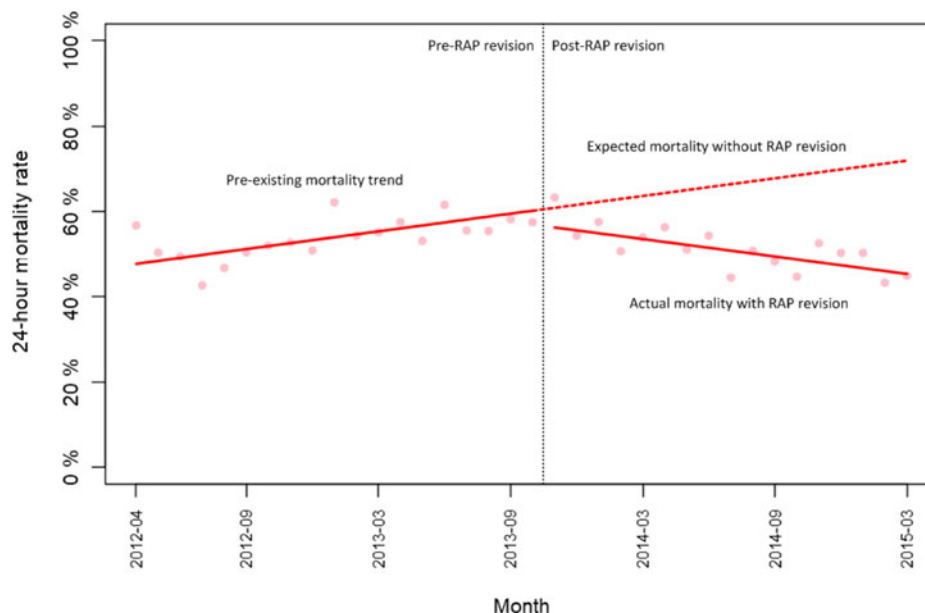
The difference between the pre-implementation trend projected forward and the observed post-implementation trend was significant ( $p < 0.001$ ) in the overall cohort.

It was observed that the 24-hour mortality of the immediately life-threatening group was increasing at the rate of 0.69% per month (8.32% per year) prior to the implementation of revision; it decreased by 3.25%

immediately after implementation, and the previously existing increasing trend shifted to a decreasing trend at 1.38% per month (16.56% per year). The descending change in 24-hour mortality trend was significant ( $p < 0.001$ , Figure 4).

### DISCUSSION

In this evaluation, it was found that the overall mortality rate was lower after implementing a change in the EMS response plan to better match resources to patient needs. Without the change in ambulance resource and speed of response, there was a steady increase in mortality rate in the immediately life-threatening group. After the change, the immediately life-threatening group demonstrated a reduction in mortality of 11%, and a decreasing trend in mortality was observed. In previous literature, it was observed that a subset of MPDS® codes were associated with predicting ED mortality and called for further studies to validate the findings.<sup>5,21</sup> Another study suggested there may be a small beneficial effect of rapid response time by advanced life support on survival rate. However, the study did not suggest that EMS response time was unimportant for lower acuity patients.<sup>22</sup> Furthermore, there was limited ability to predict which patients would require advanced life support intervention.<sup>23</sup> There have been no large observational



**Figure 4.** An interrupted time series analysis of 24-hour mortality of immediately life-threatening subgroup pre- and post-resource allocation plan change.

studies conducted to evaluate the impact of changing EMS resource management according to MPDS® code and patient outcome to date.

The strengths of this study are the inclusion of all sizes of communities across a province with varying geographic area, a large number of cases, and a population-based sample. The data linkage using personal health number matched prehospital data sets, ED, and hospital outcomes. Although response time was not the primary outcome measure, the percentage responded in less than or equal to five minutes to immediately life-threatening patients in metro communities increased because of freed up advanced life support resources to respond to higher-acuity and clinically complex cases.

This was an observational study that could demonstrate associations and concomitant conclusions, but not causation. It is a pre- and post-design based on multiple data linkage points. Potential data quality issues included failure to submit a completed patient care reports resulting in missing patient characteristics or failure to record a valid personal health number resulting in inability to linkage. No effort was made to impute missing data.

The study period coincided with the implementation of an ED-level data capture system (National Ambulatory Care Reporting System) in British Columbia. This resulted in differential availability of data in the pre- and post-periods (20 v. 29 hospitals, respectively), thus the same 20 urban and rural hospitals in both the pre- and post-periods were included in the analysis to reduce bias. Furthermore, a non-sampling error of this incomplete coverage could have caused bias in the mortality estimation. Exclusion of discharge abstract database record because of an unavailable National Ambulatory Care Reporting System record from the same case was made to restrict the analysis cohort and reduced the effect of such bias of only including the survived. It is unclear how many of the excluded cases were deceased to depict the overall impact on the patient outcome because of the restricted availability of data.

Interrupted time series was used to address the data availability issue by its ability to detect the predicted value of outcome variable at a certain time point, whether the impact of the revision is significant in terms of level change and trend change. Finally, the change in fire first responders post-resource allocation plan response was not immediately implemented in fall 2013; therefore, the analysis was solely focused on the paramedic response model and its effect on mortality.

This process and findings have implications and lessons for other EMS systems using MPDS® and associated response plans in their 911 response. The data and results suggest that EMS should utilize available patient outcome data to evaluate and optimize resource management.

## CONCLUSION

In a population-based EMS system, a re-alignment of resource allocation was associated with, in the post-implementation phase, a decrease in 24-hour mortality overall and a significant decrease in 24-hour mortality in an immediately life-threatening patient cohort. This process and findings have implications and lessons for other EMS systems using MPDS® and associated resource allocation and response plans in their primary 911 response.

**Supplementary material:** The supplementary material for this article can be found at <https://doi.org/10.1017/cem.2019.429>.

**Acknowledgements:** We would like to thank Randy Slemko and Recep Gezer for assistance with data acquisition and comments that greatly improved the manuscript; Cynthia N. Lank for editorial assistance; Douglas Andrusiek for his support; and Dr. Rob Stenstrom for his statistical expertise contribution.

**Competing interests:** None.

## REFERENCES

1. Bandara D, Mayorga ME, McLay LA. Optimal dispatching strategies for emergency vehicles to increase patient survivability. *Int J Operational Res* 2012;15(2):195–214.
2. Ball SJ, Williams TA, Smith K, et al. Association between ambulance dispatch priority and patient condition. *Emerg Med Australas* 2016;28(6):716–24.
3. Hinchey P, Myers B, Zalkin J, Lewis R, Garner Jr D. Low acuity EMS dispatch criteria can reliably identify patients without high-acuity illness or injury. *Prehosp Emerg Care* 2007;11(1):42–8.
4. Bailey ED, O'Connor RE, Ross RW. The use of emergency medical dispatch protocols to reduce the number of inappropriate scene responses made by advanced life support personnel. *Prehosp Emerg Care* 2000;4(2):186–9.
5. Hettinger AZ, Cushman JT, Shah MN, Noyes K. Emergency medical dispatch codes association with emergency department outcomes. *Prehosp Emerg Care* 2013;17(1):29–37.
6. British Columbia Emergency Health Services. Available at: <http://www.bcehs.ca/> (accessed September 9, 2018).
7. Craig AM, Verbeek PR, Schwartz B. Evidence-based optimization of urban firefighter first response to emergency



- medical services 9-1-1 incidents. *Prehosp Emerg Care* 2010;14(1):109–17.
8. Craig A. *External review of the British Columbia emergency health services resource allocation plan*. Vancouver (BC): British Columbia Emergency Health Services; 2014. Available at: [http://www.bcehs.ca/about-site/Documents/201404-external-review-of-bcehs-rap%20\(1\).pdf](http://www.bcehs.ca/about-site/Documents/201404-external-review-of-bcehs-rap%20(1).pdf) (accessed September 9, 2018).
  9. Clawson JJ. Emergency medical dispatch and prioritizing response. In: Bass RR, Brice JH, Delbridge TR, Gunderson MR, editors. *Medical oversight of EMS*. Dubuque (IA): Kendall-Hunt Publishing; 2009. pp. 554–89.
  10. Priority Dispatch. Available at: <https://prioritydispatch.net/about/> (accessed September 9, 2018).
  11. Clawson JJ, Derncoeur KB. *Principles of emergency medical dispatch*. 4th ed. Upper Saddle River (NJ): Prentice Hall; 2009.
  12. Cone DC, Galante N, MacMillan DS. Can emergency medical dispatch systems safely reduce first-responder call volume? *Prehosp Emerg Care* 2008;12(4):479–85.
  13. Michael GE, Sporer KA. Validation of low-acuity emergency medical services dispatch codes. *Prehosp Emerg Care* 2005;9(4):429–33.
  14. Newbold KB, Eyles J, Birch S, Spencer A. Allocating resources in health care: alternative approaches to measuring needs in resource allocation formula in Ontario. *Health Place* 1998;4(1):79–89.
  15. Strauch U, Bergmans DC, Winkens B, Roekaerts PM. Short-term outcomes and mortality after interhospital intensive care transportation: an observational prospective cohort study of 368 consecutive transports with a mobile intensive care unit. *BMJ Open* 2015;5(4):e006801.
  16. Canadian Institute for Health Information. *Data quality documentation, National Ambulatory Care Reporting System – current-year information, 2012–2013*. Ottawa, ON: Canadian Institute for Health Information; 2013. Available at: [https://www.cihi.ca/sites/default/files/document/nacrs\\_dataquality\\_2012\\_2013\\_en.pdf](https://www.cihi.ca/sites/default/files/document/nacrs_dataquality_2012_2013_en.pdf) (accessed September 9, 2018).
  17. Canadian Institute for Health Information. *Data quality documentation, National Ambulatory Care Reporting System – current-year information, 2014–2015*. Ottawa, ON: Canadian Institute for Health Information; 2015. Available at: [https://www.cihi.ca/sites/default/files/nacrs-dataquality\\_2014-2015\\_en\\_0.pdf](https://www.cihi.ca/sites/default/files/nacrs-dataquality_2014-2015_en_0.pdf) (accessed September 9, 2018).
  18. Sayers A, Ben-Shlomo Y, Blom AW, Steele F. Probabilistic record linkage. *Int J Epidemiol* 2016;45(3):954–64.
  19. Newgard CD. Validation of probabilistic linkage to match de-identified ambulance records to a state trauma registry. *Acad Emerg Med* 2006;13(1):69–75.
  20. Taljaard M, McKenzie JE, Ramsay CR, Grimshaw JM. The use of segmented regression in analysing interrupted time series studies: an example in pre-hospital ambulance care. *Implement Sci* 2014;9(1):77–81.
  21. Sporer KA, Youngblood GM, Rodriguez RM. The ability of emergency medical dispatch codes of medical complaints to predict ALS prehospital interventions. *Prehosp Emerg Care* 2007;11(2):192–8.
  22. Blanchard IE, Doig CJ, Hagel BE, et al. Emergency Medical Services response time and mortality in an urban setting. *Prehosp Emerg Care* 2012;16(1):142–51.
  23. Sporer KA, Johnson NJ, Yeh CC, Youngblood GM. Can emergency medical dispatch codes predict prehospital interventions for common 9-1-1 call types? *Prehosp Emerg Care* 2008;12(4):470–8.